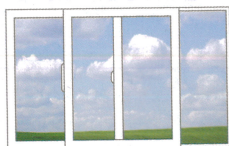


Operating Style Performance



View

When choosing windows, consider the performance of each window style as well as the weather conditions in your area. The more adverse the weather conditions, the better performance you need.



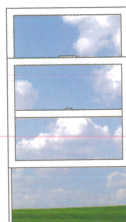
Single Glider

The sash slides from side-to-side.



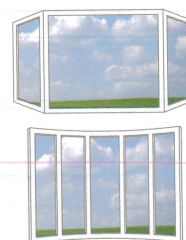
Double Hung

Both the top and bottom sashes slide for total air movement control.



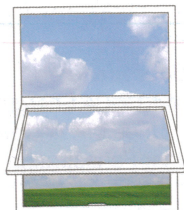
Single Hung

The bottom sash slides up for controlled air movement.



Bay & Bow

Using combinations of fixed, single hung and casement units, you can make a room larger; ideal for extra seating, or to open up a small kitchen.



Awning

Opens from the bottom using a top hinge; ensures constant air movement.



Casement

Opens outward like a door and is hinged on the side; provides good air circulation.



Fixed

Looks like a casement or awning but cannot open.



Picture

More glass surface allows a clear, unobstructed view through the glass.